



Alameda County 2021-22 School Guidance



Compiled by the
Alameda County Superintendent of Schools
and
Alameda County Health Officer

Updated November 8, 2021

Table of Contents

Latest updates are marked with a ☆

Federal Guidance	3
State Guidance	4
Local Guidance	5
☆ Vaccines	6
☆ Additional Guidance	7
Isolation, Quarantine & Testing Resources	8
Close Contact Letter Templates	8
☆ Show up for School Resources	9
FAQs	10 - 15

How to Use This Guidance Document

As COVID-19 restrictions have been lifted and Alameda County has aligned itself with both state and federal guidance, we have created a new document for the 2021-2022 school year that makes it easier for you to go directly to the source for resources, guidance and pertinent documents.

Please note that many of the links include the date of their most recent version for your clarity.

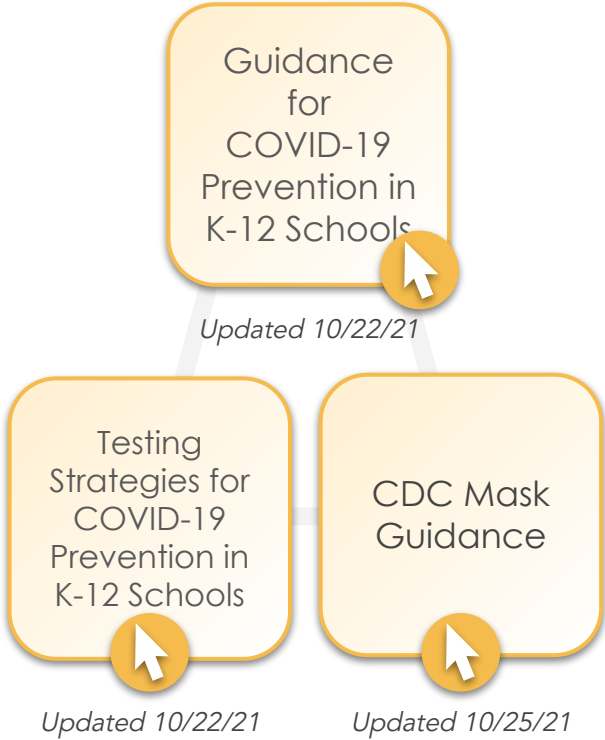
We will continue to ensure that these links are updated and that any other relevant information is added and we will mark new updates as they come in with teal text on the dates listed.



FEDERAL GUIDANCE

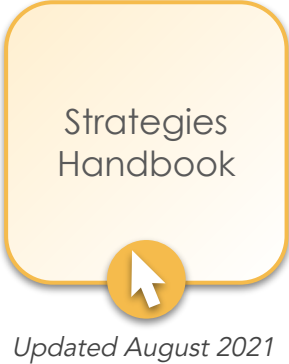
Centers for Disease Control

CDC Released the first version of its guidance for K-12 Education for the 2021-22 school year on July 9, 2021



U. S. Department of Education

This guide presents a pathway to reopen schools and help them remain open.



STATE GUIDANCE

State Guidance for Reopening Schools

The Safe Schools For All Hub consolidates key resources and information related to COVID-19 and schools.

Cal/OSHA

Emergency
Temporary
Standards for
Employers
and Workers



Updated 6/17/21

Safe Schools
For All Hub



California Department of Public Health

Outbreak
Response Teams

Mobile
Testing and
Vaccination
Services



Updated 8/13/21

Guidance
for K-12
Schools



Updated 10/20/21

Face
Covering
Guidance



Updated 7/28/21

K-12 Schools
Testing
Framework



Updated 7/12/21

Vaccine
Verification
Q&A

Updated 8/19/21

Vaccine
Verification
for Workers
in Schools



Updated 8/11/21

K-12 School
Guidance
FAQ



Updated 10/14/21

LOCAL GUIDANCE

Health Officer Orders

Alameda
County
Health
Orders



Updated 6/14/21

Berkeley
Health
Orders



Updated 11/01/21

Orders of the County of Alameda's Public Health Officer and the City of Berkeley Public Health Officer Orders - with reopening requirements specific to schools in Berkeley.

Positive Case Reporting, Symptom Protocol & Testing

Confirmed
Case
Process



Updated 7/28/21

Report a
Positive
Case



School
Portal for
Outbreak
Tracking
Intake Form



Testing FAQs



Updated
11/8/21

Re-Testing
Guidance



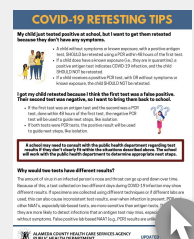
Updated 5/20/21

Learn More
About Free
Testing
Programs



Confirmed COVID-19 and SARS-CoV-2 Positive Testing Process for Schools, Child Care Programs and Extracurricular Programs.

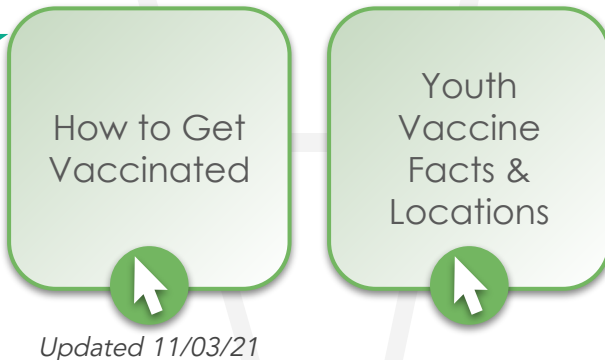
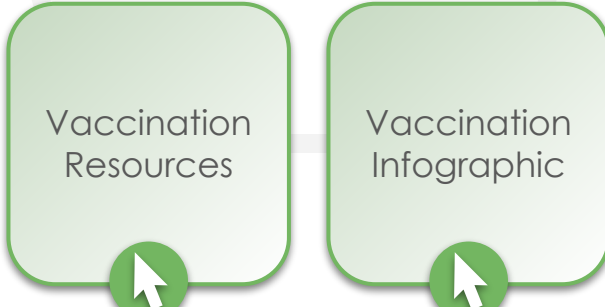
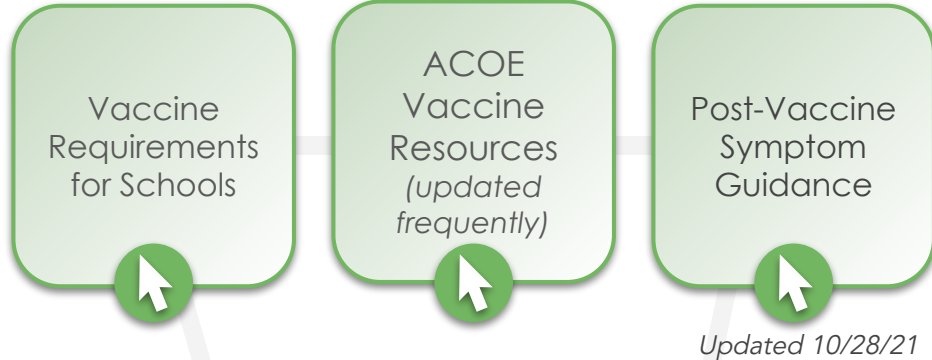
COVID-19 Retesting Tips



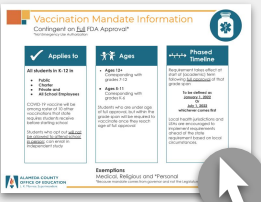


VACCINES

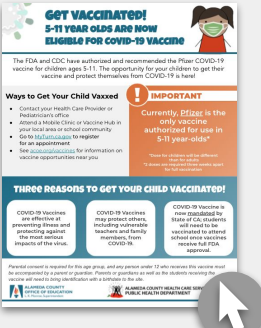
CDPH strongly recommends that all persons eligible to receive COVID-19 vaccines receive them at the first opportunity.

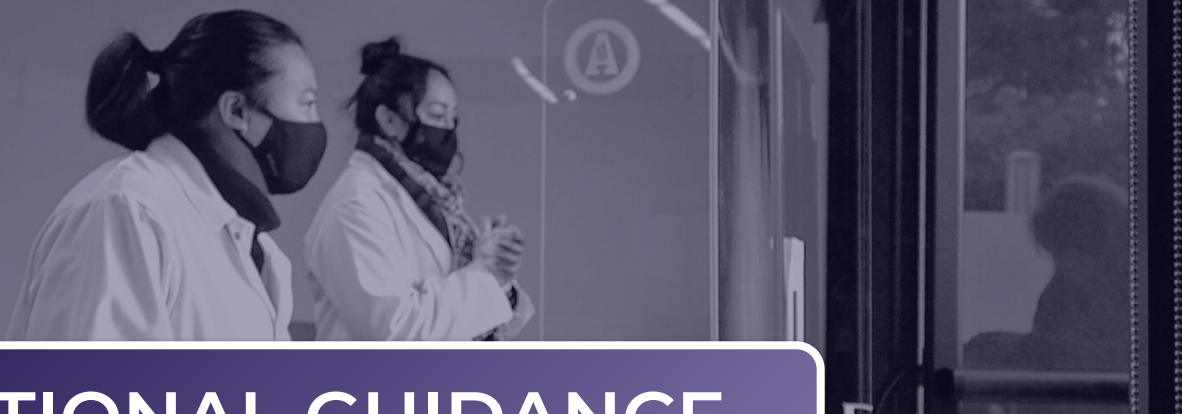


Vaccine Mandate Overview



★ Age 5-11 Vaccine Information





ADDITIONAL GUIDANCE

**A
B
C**

CHILD CARE

Updated 6/29/21

☁️

AIR QUALITY

Updated 9/16/21

Youth Sports

Interim
Guidance for
Youth Sports &
Extracurricular
Activities

👉

Updated 9/03/21

Face
Covering
Guidance

👉

Updated 7/28/21

Face
Covering
Q&A

👉

Updated 9/01/21

Holidays & Travel



Travel Guidance
Overview Flyer

TRAVEL

✈️

Updated 9/23/21

★

Tips to Stay
Safe During
Potential
Winter Surge

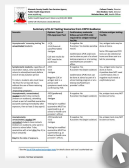
👉

Updated 11/08/21



ISOLATION, QUARANTINE & TESTING

Handouts



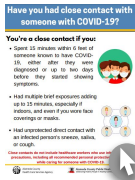
Summary of K-12 Testing Scenarios
Updated 11.8.21



[When Can I Leave Isolation?](#)



[How Long Should I Stay in Quarantine?](#)



[Have I Had Close Contact With Someone With COVID-19?](#)



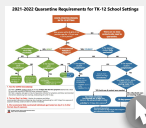
[I've Recovered From COVID, Now What?](#)



[Guidance for Close-Contact Positive Person in Household](#)



[How to Create Quarantine Space in Tight Quarters](#)



2021-2022 Quarantine Requirements for TK-12 School Settings

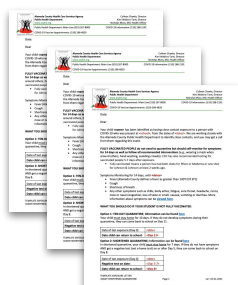


Modified & Shortened Quarantine



Quarantine Timeline

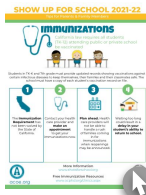
Close Contact Letter Templates



- [Letter for 10 Day Quarantine & Shortened Quarantine Options](#)
- [Letter for 10 Day Quarantine Option](#)
- [Letter for All Quarantine Options](#)

SHOW UP FOR SCHOOL RESOURCES

Handouts



[Immunization Information](#)



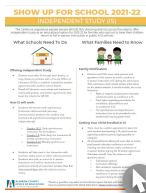
[What to Expect When Returning to School](#)



[Free Meals Information](#)



[Tips for Getting Back to Class](#)



[Changes to Independent Study](#)



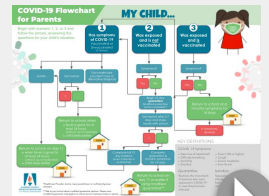
[Modified & Shortened Quarantine](#)



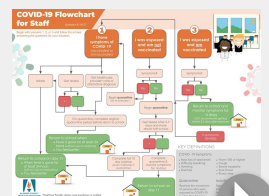
[Age 5-11 Vaccine Information](#)

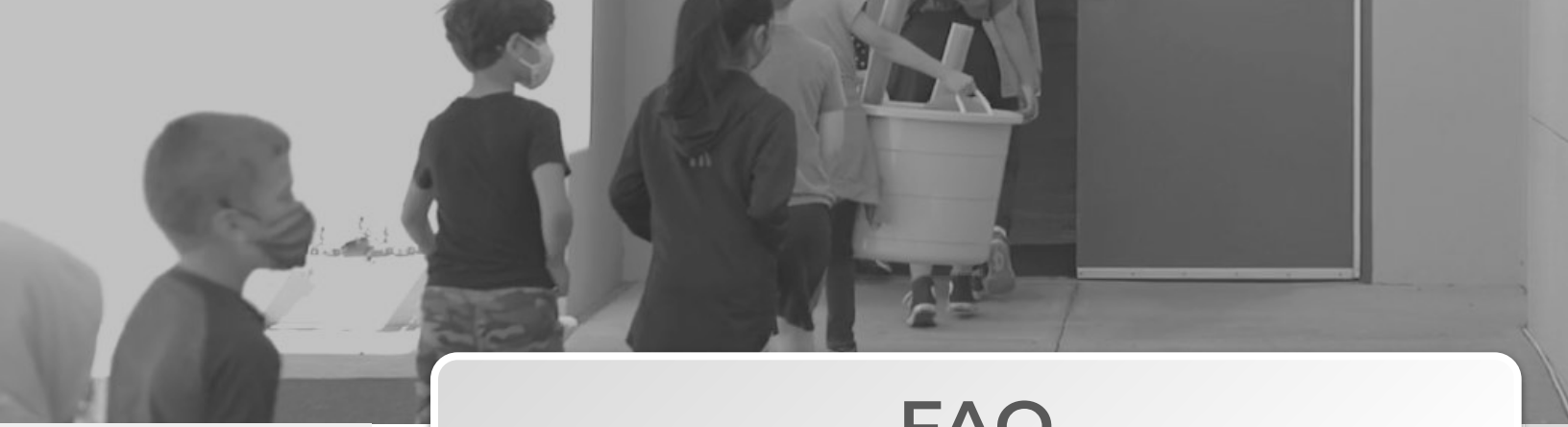
Step-by-Step Flowcharts

Child Exposed to or Experiencing Symptoms



Staff Exposed to or Experiencing Symptoms





FAQ

Lunch & Recess

Quick Links

[Testing FAQ](#)

[School Reopening
Town Hall FAQ](#)

[Face Covering FAQ](#)

➤ **How can we minimize close contact when eating lunch indoors?**

Since students are not eligible for modified quarantine when contact is unmasked, employ physical distance to the degree feasible for your space. Look for opportunities to spread indoor lunch across multiple settings, so students don't all occupy one space. Maximize the opportunities for outdoor lunch. You might also consider requiring masking when students are not actively eating, both inside and outside, as a further layer of protection. Though there is no mandate for outdoor masking, you are still able to implement additional health measures where practicable.

➤ **If high schools have open campus for lunch, is it safe for students to leave campus? What are the implications for contact tracing with open campus?**

There is no recommendation to close campuses. However, if students are off campus for lunch, it would exclude these students from the modified quarantine option. It might also be more difficult to contact trace in the event of a positive case.



FAQ

Modified Quarantine

Modified and Shortened Quarantine Please see the [Modified and Shortened Quarantine document on page 9](#) for more detail regarding these alternative quarantine options.

➤ **Can students attend afterschool programs when they are in modified quarantine?**

Yes, as long as the afterschool program is located on the same campus where they attend school. Afterschool programs may be considered an essential component of the school day. Clear communication protocols with the school regarding who is in modified quarantine and for how long should be established. Though they may participate in aftercare/afterschool programs, they should refrain from all other extracurricular activities, including sports.

➤ **If students are exposed to a COVID-19 positive case in an afterschool program, are they eligible for modified quarantine?**

Yes, but you should proceed with caution. The ability to confirm mask compliance in the positive case and contacts, conduct twice-weekly testing, track test results, and develop clear communication protocols with the school regarding who is in modified quarantine and for how long should be in place.

➤ **Are the modified and shortened quarantine options required?**

No, modified and shortened quarantine are optional alternatives to a full 10-day quarantine. Districts/schools should consider their capacity to offer and track the testing component of these quarantine options before they decide to offer them to students.

➤ **Can students enter modified quarantine if they were exposed outside of a school setting?**

No. Modified quarantine applies only to potential exposures in indoor and outdoor school settings (including buses operated by the public and private school system). Please refer to the [CDPH FAQ](#) for an extensive list.

Definitions

Isolation separates people who are **infected** with a contagious disease from people who are not infected. [An infographic that explains Isolation can be viewed on page 8.](#)

Quarantine is used to keep someone who might have been **exposed** to COVID-19 away from others. [Frequently Asked Questions \(FAQ\) about Quarantine can be viewed on page 8.](#)



FAQ

Modified Quarantine

➤ **Are staff able to be on modified quarantine?**

No. Modified quarantine applies to students only.

➤ **In a modified quarantine, when can the student return? For example, if they have their first test scheduled for Wednesday, can they return on Tuesday? Or must they have completed the first test prior to return?**

Ideally, the student will get tested immediately (i.e. the first day they are in quarantine). If the student is not able to test immediately, they may remain in class while they seek testing and await the result. The second test should be at least 3 days after the first test. If their final test is negative on or after day 5, they may exit quarantine on Day 8.

➤ **What do we do when there are multiple students who test positive in a classroom?**

Additional case investigation and contact tracing are required for each additional case. **While community case rates are high**, a modified quarantine strategy is not advised in the event of a suspected outbreak of 3 or more epi-linked cases (which can indicate in-school transmission) in a classroom within a 14-day period. Full (10-day) and shortened (7-day) quarantine options are less resource-intensive when a large number of students require quarantine.

➤ **When determining the appropriate type of quarantine, what does it mean to be unmasked?**

If a student is unmasked for > 15 minutes, including at lunch or recess, then the student would be considered unmasked.



FAQ

General Quarantine & Siblings

- **If a student/staff person develops symptoms of COVID-19 while in quarantine and is not able to get a timely test result, what should the school do?**

Since the person has been exposed and has symptoms, you can presume the person is COVID-19 positive and ask that unvaccinated siblings and close contacts at school enter quarantine. If the symptomatic person receives a negative PCR or molecular test, siblings and close contacts may be released from quarantine.

- **What if a parent or sibling has COVID-19 and cannot avoid interacting with a student?**

The student should quarantine for at least 10 days after the person with COVID-19 in their household completes 10 days of isolation. Day 1 of quarantine is the day the infected person was released from isolation.

- **If a student has been exposed to a positive case at school, do the student's siblings also need to quarantine?**

No, only the close contacts of the positive case must quarantine.

- **If a student or staff member was previously diagnosed with COVID-19, do they need to quarantine after being exposed to a positive case?**

If a student or staff member was diagnosed with/tested positive for COVID-19 within the last 90 days, they do not have to quarantine as long as they remain asymptomatic. The 90-day period begins the day the person was released from isolation. If they develop symptoms of COVID-19, they should isolate and contact their healthcare provider.



FAQ

Positive Cases/Treating After 90 Days

- **Does someone who has been diagnosed with COVID-19 need to receive a negative test result before returning to work or school?**

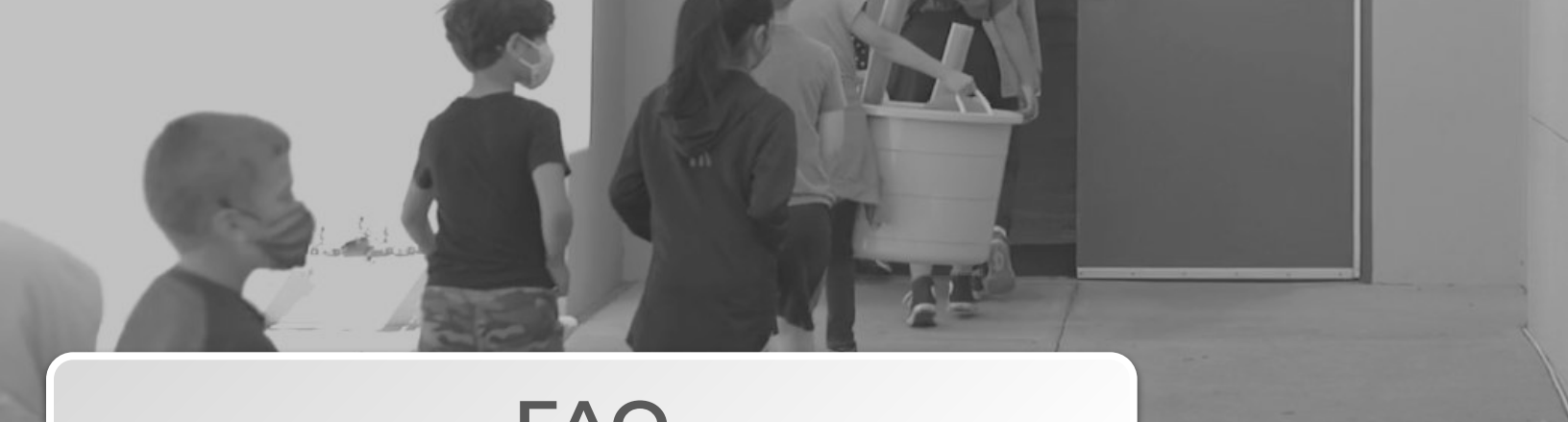
No. People who have been diagnosed with COVID-19 should not test for at least 90 days after they have been released from isolation. People may continue to test positive after they are. ACPHD advises against testing within 90 days, including screening testing at school sites. If the person has symptoms, they should isolate and contact their health care provider to determine appropriate next steps.

- **What if we believe a student or staff test result is a false positive? Can they re-test?**

False positives may occur with any test. There is no recommended procedure to determine that a PCR result is false, which is extremely uncommon. One or more negative PCR tests before or after a positive one does not indicate that the positive result is false, as viral shedding may be intermittent. ACPHD generally recommends against re-testing a patient with a positive PCR result, even if they are fully vaccinated OR unvaccinated but asymptomatic. A positive antigen test (e.g. Binax Now) in an **asymptomatic, unexposed** person should be confirmed by PCR per our testing chart. A positive antigen test in an **asymptomatic exposed** person or in someone who is **symptomatic** does not need confirmation with a PCR test. If a person does choose to get a confirmatory test, the PCR should be collected on the same day if possible.

- **Does someone with a possible false positive antigen result need to begin isolation right away?**

If a positive antigen test is being confirmed by PCR, the person should isolate until the results of the PCR are back.



FAQ

Masking

- **Can we have more strict masking requirements than the guidance?**

Yes. Schools and districts can set policies more restrictive than the state and county guidance, but not less restrictive.

Contact Tracing

- **Are seating charts required for indoor classroom spaces for contact tracing purposes?**

Seating charts are not required but strongly recommended, wherever possible, to assist with contact tracing.