



Alameda County 2021-22 School Guidance



Compiled by the
Alameda County Superintendent of Schools
and
Alameda County Health Officer

Updated March 9, 2022

Table of Contents

Latest updates are marked with a ☆

Federal Guidance	3
State Guidance	4
Local Guidance	5
Vaccines	6
Additional Guidance	7
Isolation, Quarantine & Testing Resources	8
☆ Close Contact Letter Templates	8
Show up for School Resources	9
FAQs	10 - 13

How to Use This Guidance Document

As COVID-19 restrictions have been lifted and Alameda County has aligned itself with both state and federal guidance, we have created a new document for the 2021-2022 school year that makes it easier for you to go directly to the source for resources, guidance and pertinent documents.

Please note that many of the links include the date of their most recent version for your clarity.

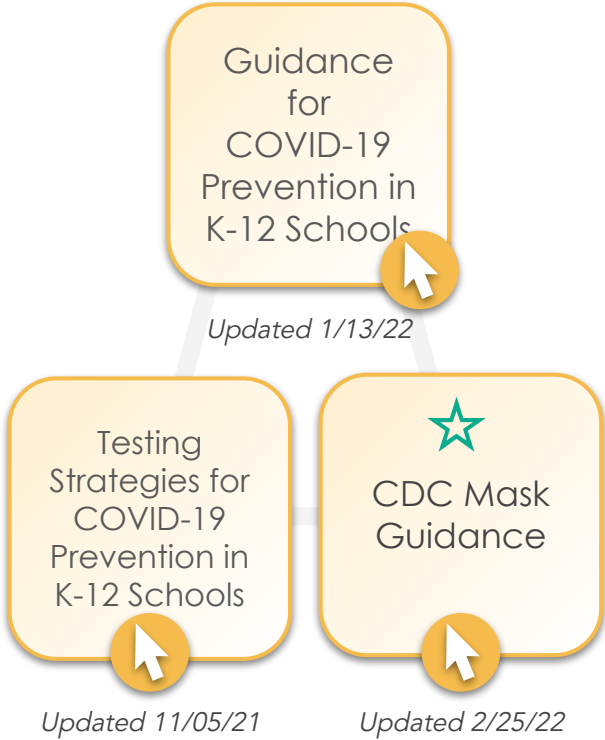
We will continue to ensure that these links are updated and that any other relevant information is added and we will mark new updates as they come in with teal text on the dates listed.



FEDERAL GUIDANCE

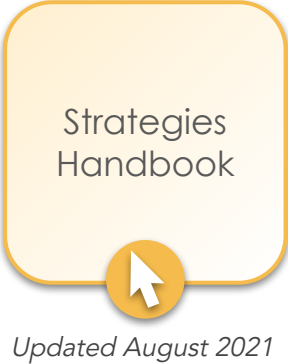
Centers for Disease Control

CDC Released the first version of its guidance for K-12 Education for the 2021-22 school year on July 9, 2021



U. S. Department of Education

This guide presents a pathway to reopen schools and help them remain open.



STATE GUIDANCE

State Guidance for Reopening Schools

Cal/OSHA

Emergency
Temporary
Standards for
Employers
and Workers



Updated March 2022

The Safe Schools For All Hub consolidates key resources and information related to COVID-19 and schools.

Safe Schools
For All Hub



California Department of Public Health

Outbreak
Response Teams

Mobile
Testing and
Vaccination
Services



Updated 8/13/21

Group
Contact
Tracing



Updated 1/12/22

Guidance
for K-12
Schools



Updated 1/12/22
Includes Sports
Guidance

Face
Covering
Guidance



Updated 2/28/22

K-12
Schools
Testing
Framework



Updated 11/01/21

Vaccine
Verification
Q&A

Updated 8/19/21

Vaccine
Verification
for Workers
in Schools



Updated 8/11/21

K-12 School
Guidance
FAQ



Updated 1/12/22

Isolation &
Quarantine
(Staff)



Updated 1/08/22

LOCAL GUIDANCE

Health Officer Orders

Alameda County Health Quarantine Orders



Updated 1/07/22

Alameda County Health Isolation Orders



Updated 1/07/22

Berkeley Health Orders



Updated 2/22/22

Orders of the County of Alameda's Public Health Officer and the City of Berkeley Public Health Officer Orders - with reopening requirements specific to schools in Berkeley.

Positive Case Reporting, Symptom Protocol & Testing

Report a Positive Case



Learn More About Free Testing Programs



Keeping Kids in School FAQ



Updated 1/26/22

Confirmed COVID-19 and SARS-CoV-2 Positive Testing Process for Schools, Child Care Programs and Extracurricular Programs.

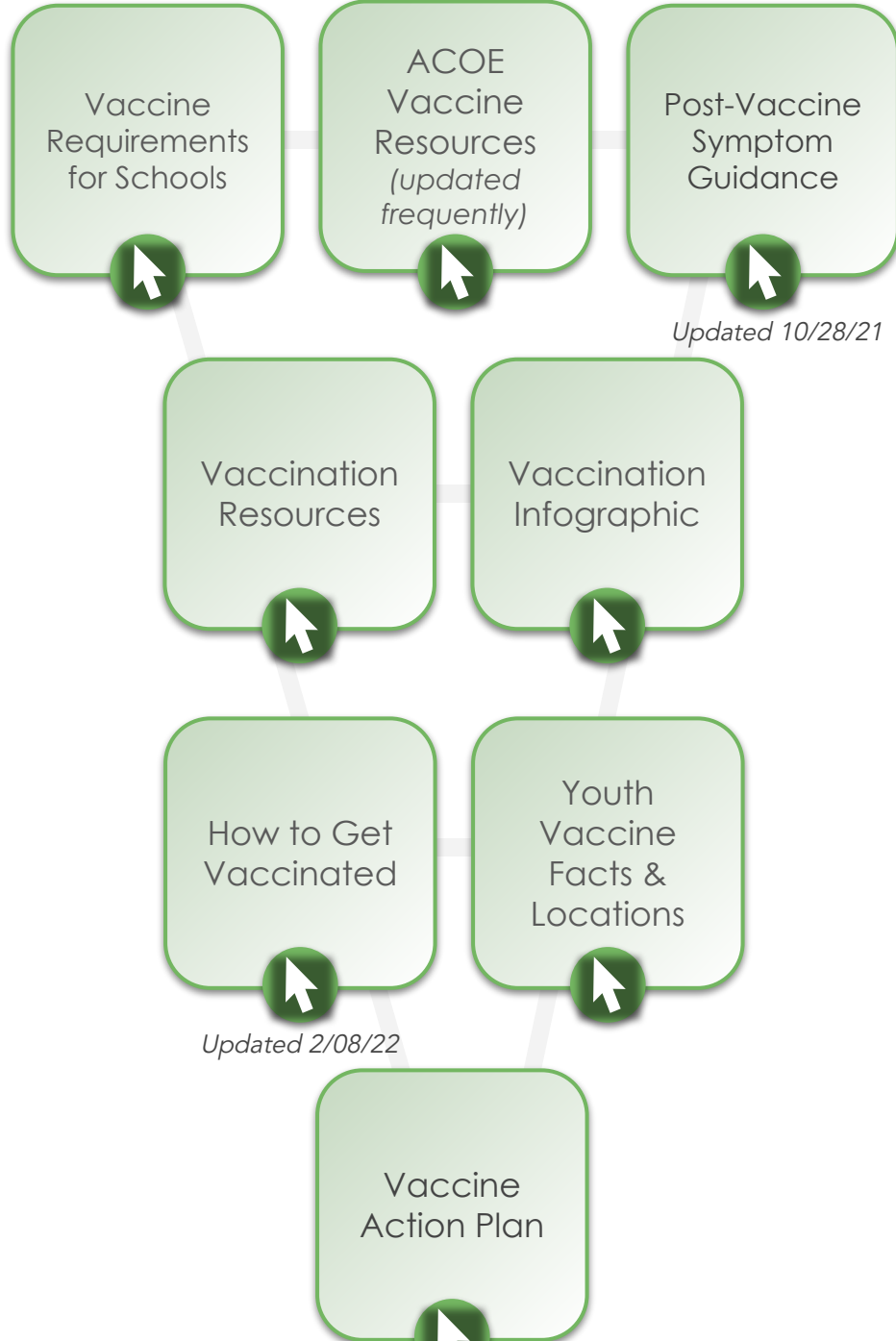
Summary of K-12 Testing Scenarios
Updated 1/14/22

COVID-19 Retesting Tips



VACCINES

CDPH strongly recommends that all persons eligible to receive COVID-19 vaccines receive them at the first opportunity.

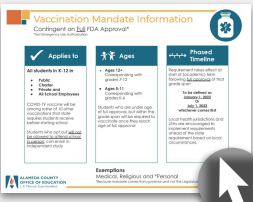


Updated 10/28/21

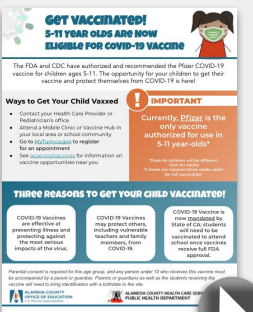
Updated 2/08/22

Updated 9/23/21

Vaccine Mandate Overview



Age 5-11 Vaccine Information





ADDITIONAL GUIDANCE

CHILD CARE

Updated 2/18/22

AIR QUALITY

Updated 9/16/21

Masking

Face Covering Guidance

Updated 2/28/22

Face Covering Q&A

Updated 2/16/22

Events & Travel

TRAVEL

Updated 1/25/22

Mega Events

Updated 2/22/22

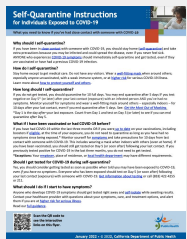
Tips to Stay Safe During Potential Winter Surge

Overnight Field Trips



ISOLATION, QUARANTINE & TESTING

Handouts



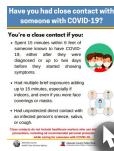
Self-Quarantine Instructions (CDPH)



[When Can I Leave Isolation?](#)



[How Long Should I Stay in Quarantine?](#)



[Have I Had Close Contact With Someone With COVID-19?](#)



[Retesting Tips](#)

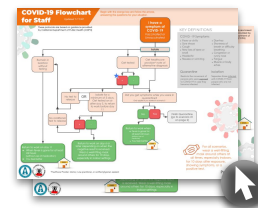
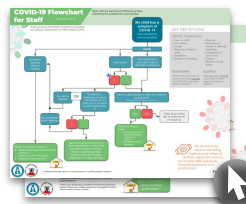


[Guidance for Close-Contact Positive Person in Household](#)

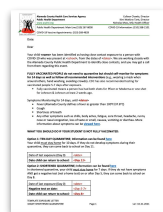
Step-by-Step Flowcharts

Child Exposed or Experiencing Symptoms

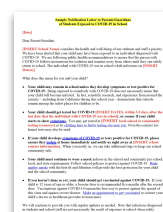
Staff Exposed or Experiencing Symptoms



Close Contact Exposure Letter



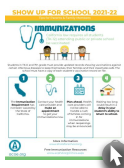
[Close Contact Exposure Letter](#)



[CDPH Group Contact Tracing Exposure Letter](#)

SHOW UP FOR SCHOOL RESOURCES

Handouts



[Immunization Information](#)



[What to Expect When Returning to School](#)



[Free Meals Information](#)



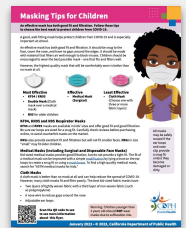
[Tips for Getting Back to Class](#)



[Changes to Independent Study](#)

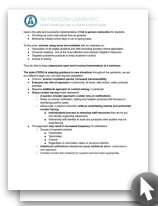


[Age 5-11 Vaccine Information](#)

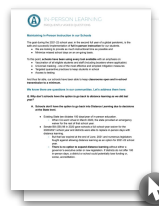


Masking Tips for Children (CDPH)

Messaging on New State Guidance and In-Person Instruction



Messaging
Updated 1/19/22



FAQ
Updated 1/19/22



FAQ

Quick Links

[Face Covering FAQ](#)

[Vaccine FAQ](#)

[Keeping Kids in School FAQ](#)

Lunch & Recess

➤ **How can we minimize close contact when eating lunch indoors?**

Employ physical distance to the degree feasible for your space. Look for opportunities to spread indoor lunch across multiple settings, so students don't all occupy one space. Maximize the opportunities for outdoor lunch. You might also consider requiring masking when students are not actively eating, both inside and outside, as a further layer of protection. Though there is no mandate for outdoor masking, you are still able to implement additional health measures where practicable.

➤ **If high schools have open campus for lunch, is it safe for students to leave campus? What are the implications for contact tracing with open campus?**

There is no recommendation to close campuses. However, unvaccinated students who are exposed off campus must quarantine AT HOME for a minimum of 5 days. Having students off campus for lunch might make it more difficult to contact trace in the event of a positive case.

COVID Symptoms

➤ **What language should a medical evaluation (defined as Physician, Nurse Practitioner, or Certified Physician Assistant) include in at note documenting a student's chronic medical condition?**

The note should describe the symptoms typical of the student's underlying chronic condition (e.g., allergies or asthma) and provide a time boundary for the symptoms when applicable.

FAQ

Keeping Exposed Students in School

➤ **What do we do when there are multiple students who test positive in a classroom?**

Case investigation is required for each additional case. Exposed, unvaccinated students can remain at school and test or the school can elect to have these students complete at-home quarantine.

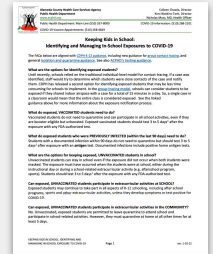
Testing to Release from Isolation

➤ **Does someone who has been diagnosed with COVID-19 need to receive a negative test result before returning to work or school?**

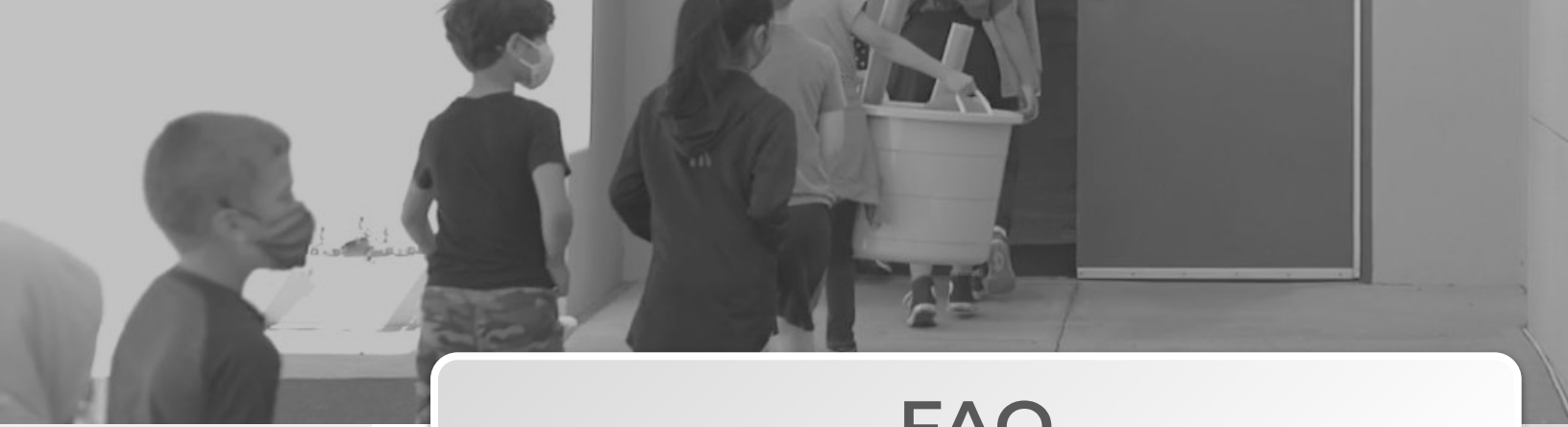
It depends. Persons who complete a standard 10-day isolation should NOT test prior to release. In order to complete a less than 10-day isolation period, a student or staff member should have a negative antigen test before release. If a clearance test is positive, it is recommended they complete the full 10-day isolation without any additional testing.

➤ **What should I advise a student/staff to do who has had COVID in the past 90 days and develops symptoms?**

Anyone with symptoms of COVID-19 should get tested. A positive antigen test would indicate a new COVID-19 infection. A positive PCR test may indicate a new infection or leftover virus from the previous infection. If someone had a documented COVID-19 infection within 90 days and tests positive by PCR, they should contact their healthcare provider for next steps.



[Keeping Kids in School: Exposure, Test-to-Stay, and General Testing FAQs](#)



FAQ

Masking

➤ **Can we have more strict masking requirements than the guidance?**

Yes. Schools and districts can set policies more restrictive than the state and county guidance, but not less restrictive.

➤ **Are mesh masks acceptable?**

Mesh masks are decorative only and do NOT meet CDPH guidance on what constitutes an effective mask. See CDPH "[Get the Most out of Masking](#)" resource.

Contact Tracing

➤ **Are seating charts required for indoor classroom spaces for contact tracing purposes?**

Seating charts are not required but strongly recommended, wherever possible, to assist with individual-level contact tracing.

Travel

➤ **How does Alameda County Public Health Department (ACPHD) define domestic travel?**

CDPH has [summarized CDC travel guidance](#). Alameda County has defined domestic travel as travel outside the nine Bay Area counties (Alameda, Contra Costa, Marin, Napa, San Francisco, San Mateo, Santa Clara, Solano and Sonoma).



FAQ

General Quarantine & Siblings

- **If a student/staff person develops symptoms of COVID-19 while in quarantine and is not able to get a timely test result, what should the school do?**

Since the person has been exposed and has symptoms, you can presume the person is COVID-19 positive and ask that unvaccinated siblings and close contacts at school enter quarantine. If the symptomatic person receives a negative test, siblings and close contacts may be released from quarantine.

- **What if a parent or sibling has COVID-19 and cannot avoid interacting with a student?**

If the student is vaccinated, they do not need to quarantine. If they are unvaccinated, the student should quarantine for at least 5 days after the person with COVID-19 in their household completes their isolation. Day 1 of quarantine is the day the infected person was released from isolation.

- **If a student has been exposed to a positive case at school, do the student's siblings also need to quarantine?**

No, only the close contacts of the positive case must quarantine.

- **If a student or staff member was previously diagnosed with COVID-19, do they need to quarantine after being exposed to a positive case?**

If a student or staff member was diagnosed with/tested positive for COVID-19 within the last 90 days, they do not have to quarantine as long as they remain asymptomatic. The 90-day period begins the day the person was released from isolation. If they develop symptoms of COVID-19, they should isolate and contact their healthcare provider.

- **Can a home antigen test be used to release from isolation?**

Yes, a [home antigen test may be used](#) to release from isolation. Please see this [CDPH Over-The-Counter-Test \(aka home test\) guidance](#) for more information.