



Alameda County 2021-22 School Guidance



Compiled by the
Alameda County Superintendent of Schools
and
Alameda County Health Officer

Updated April 7, 2022

Table of Contents

Latest updates are marked with a ☆

Federal Guidance	3
☆ State Guidance	4
☆ Local Guidance	5
☆ Vaccines	6
☆ Additional Guidance	7
☆ Isolation, Quarantine & Testing Resources	8
Close Contact Letter Templates	8
☆ Show up for School Resources	9
☆ FAQs	10

How to Use This Guidance Document

As COVID-19 restrictions have been lifted and Alameda County has aligned itself with both state and federal guidance, we have created a new document for the 2021-2022 school year that makes it easier for you to go directly to the source for resources, guidance and pertinent documents.

Please note that many of the links include the date of their most recent version for your clarity.

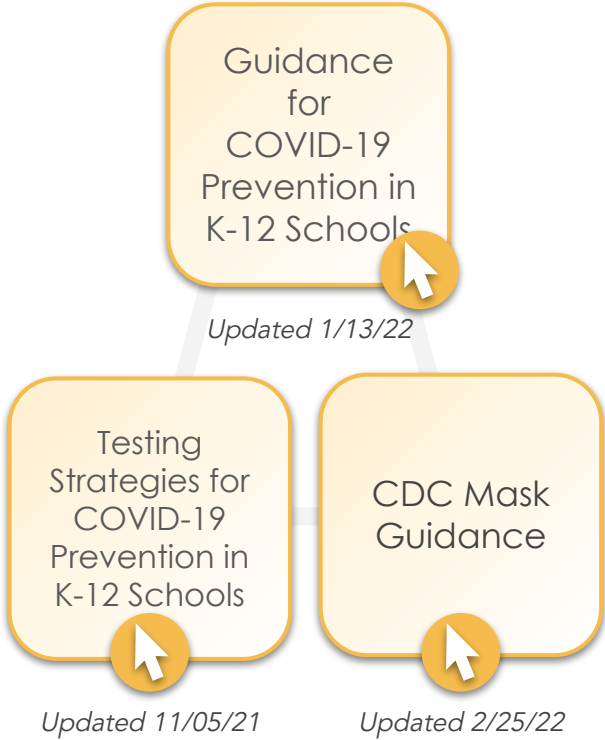
We will continue to ensure that these links are updated and that any other relevant information is added and we will mark new updates as they come in with teal text on the dates listed.



FEDERAL GUIDANCE

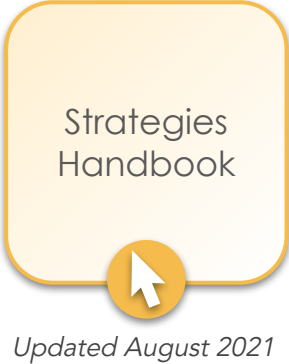
Centers for Disease Control

CDC Released the first version of its guidance for K-12 Education for the 2021-22 school year on July 9, 2021



U. S. Department of Education

This guide presents a pathway to reopen schools and help them remain open.



STATE GUIDANCE

State Guidance for Reopening Schools

Cal/OSHA

Emergency Temporary Standards for Employers and Workers



Updated March 2022

The Safe Schools For All Hub consolidates key resources and information related to COVID-19 and schools.

Safe Schools For All Hub



California Department of Public Health

Outbreak Response Teams

Mobile Testing and Vaccination Services



Updated 8/13/21

Group Contact Tracing



Updated 3/12/22

★ Guidance for K-12 Schools



Updated 4/06/22
Includes Sports Guidance

Face Covering Guidance



Updated 2/28/22

K-12 Schools Testing Framework



Updated 11/01/21

Vaccine Verification Q&A

Updated 8/19/21

Vaccine Verification for Workers in Schools



Updated 8/11/21

K-12 School Guidance FAQ



Updated 3/12/22

★ Isolation & Quarantine (Staff)



Updated 4/06/22

★ Safe & SMART Events Playbook



Updated 4/1/22

LOCAL GUIDANCE

Health Officer Orders

Alameda County Health Quarantine Orders



Updated 1/07/22

Alameda County Health Isolation Orders



Updated 1/07/22

Berkeley Health Orders



Updated 3/25/22

Orders of the County of Alameda's Public Health Officer and the City of Berkeley Public Health Officer Orders - with reopening requirements specific to schools in Berkeley.

Positive Case Reporting, Symptom Protocol & Testing

Report a Positive Case



Learn More About Free Testing Programs

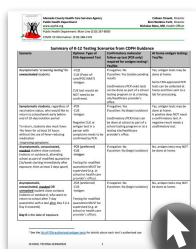


ACPHD K-12 Schools FAQ



Updated 4/07/22

Confirmed COVID-19 and SARS-CoV-2 Positive Testing Process for Schools, Child Care Programs and Extracurricular Programs.



Summary of K-12 Testing Scenarios
Updated 1/14/22



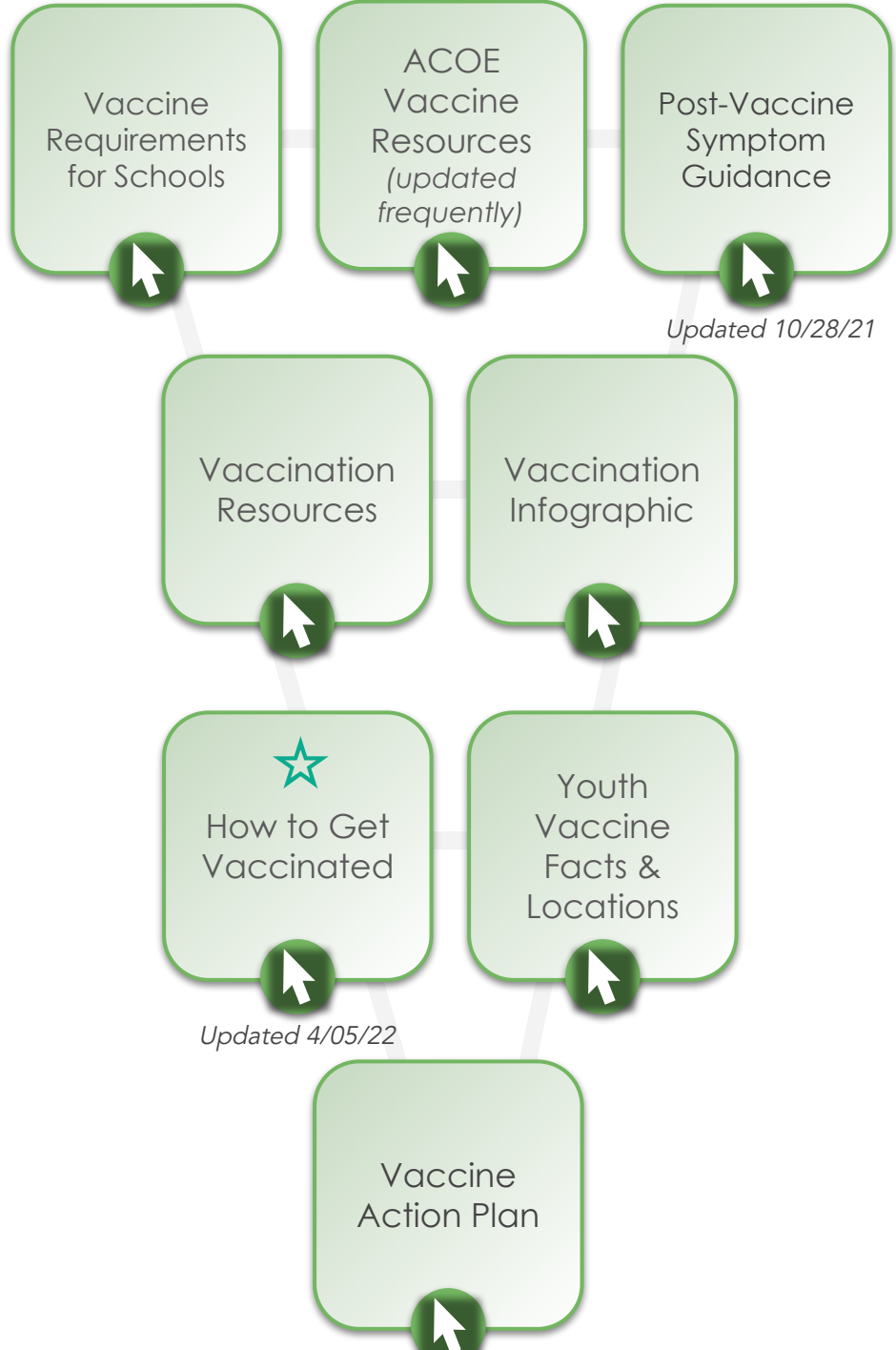
COVID-19 Retesting Tips

Overnight Field Trips

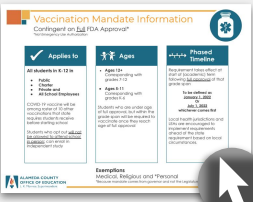


VACCINES

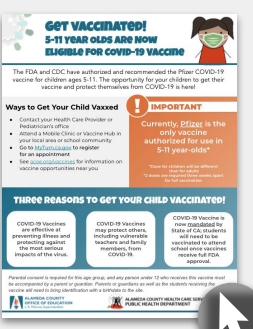
CDPH strongly recommends that all persons eligible to receive COVID-19 vaccines receive them at the first opportunity.

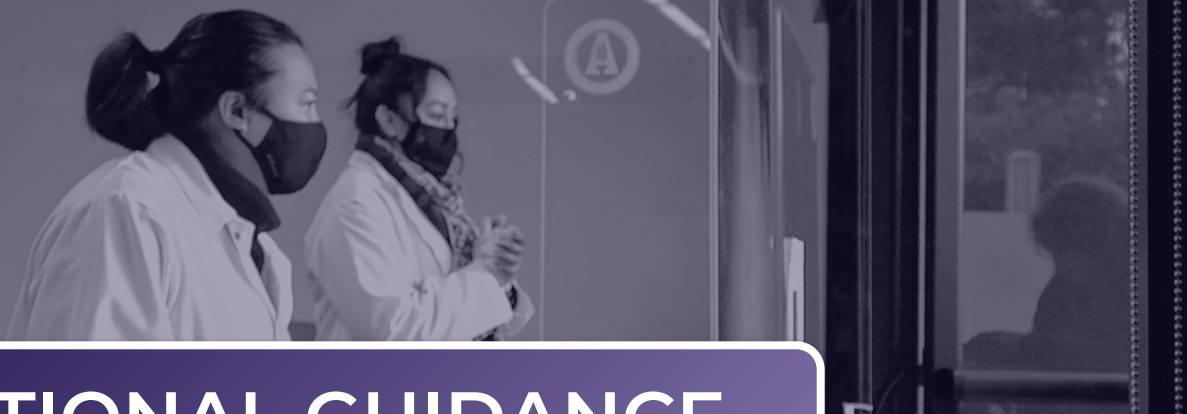


Vaccine Mandate Overview



Age 5-11 Vaccine Information





ADDITIONAL GUIDANCE

Masking, Events & Travel

★
Safe & SMART
Events
Playbook



Updated 4/1/22

★
Mega Events



Updated 4/05/22

A
B
C
2
3
C
CHILD CARE



Updated 3/12/22

AIR QUALITY



Updated 9/16/21

Face
Covering
Guidance




Updated 2/28/22

Face
Covering
Q&A



Updated 3/11/22

★
TRAVEL




Updated 3/24/22


Overnight Field Trips

Students with Special or Other Health Care Needs

Guidance
from CDC



Guidance
from AAP



Guidance
from Healthy
Kids
Collaborative





ISOLATION, QUARANTINE & TESTING

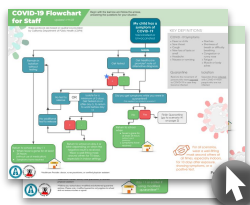
Handouts

When Can I Leave Isolation?

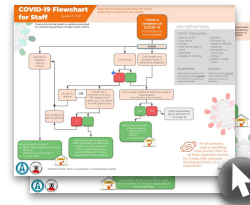
Retesting Tips

Step-by-Step Flowcharts

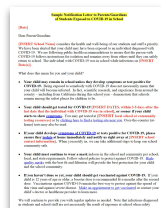
Child Exposed or Experiencing Symptoms



Staff Exposed or Experiencing Symptoms



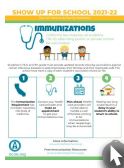
Close Contact Exposure Letter



CDPH Group Contact Tracing Exposure Letter

SHOW UP FOR SCHOOL RESOURCES

Handouts



[Immunization Information](#)



[What to Expect When Returning to School](#)



[Free Meals Information](#)



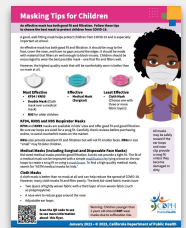
[Tips for Getting Back to Class](#)



[Changes to Independent Study](#)



[Age 5-11 Vaccine Information](#)

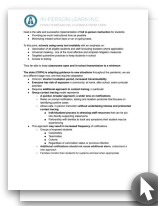


Masking Tips for Children (CDPH)

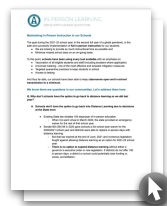


Mask Season

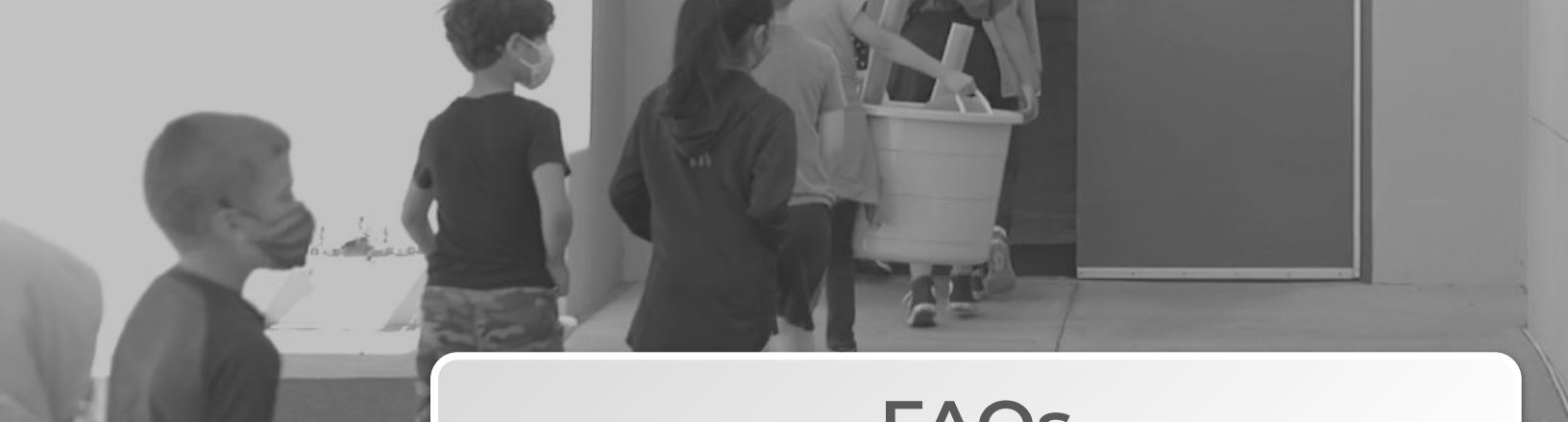
Messaging on New State Guidance and In-Person Instruction




Messaging
Updated 1/19/22




FAQ
Updated 1/19/22




FAQs


ACPHD K-12
Schools FAQ



Updated 4/07/21

CDPH K-12
School
Guidance
Q&A




Updated 3/12/21

Face
Covering
Q&A



Updated 3/11/21

Vaccine FAQ



Updated 9/16/21