

PBLWorks Teacher Facing Services Scope of Work

District Name:	Livermore Valley Joint Unified School District
Primary Contact:	Chris Connor
Primary Contact Email:	cconnor@lvjUSD.org
Contract Dates:	March 2022 - June 2025
Date:	February 28, 2023

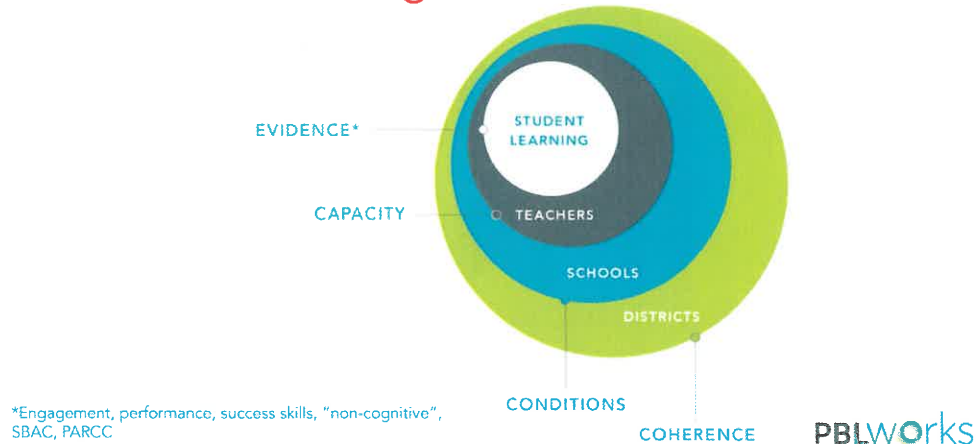
Overview

This document both summarizes our conversation and also outlines the workshops and services that represent what a partnership between PBLWorks and Mancos School District RE-6 could look like. This is intended to support your internal conversations and planning so we can further discuss how we might move forward in partnership to implement and sustain PBL well in your district. Any recommended services are **highlighted in yellow**. This simply means we recommend including these workshops additionally with the full Scope of Work. The total cost listed includes recommended services. Please see

[PBLWorks Services Catalog](#) for a complete description of our services.

PBL LEADERSHIP SERIES

PBLWorks Strategic Frame



We work with **DISTRICT** leaders to provide **COHERENCE**

The most successful implementations start with a solid foundation by examining the system as it currently is and readying to support change. This includes and is especially true at the district level. Our goal is to help your team create the broader ecosystem needed for PBL to successfully take root and flourish in your system.

At the **SCHOOL** level we are building the **CONDITIONS** for this work to build and improve across time. We help you create your own **VISION** for PBL & develop a **CULTURE** of collaboration not just among teachers, but among leaders to give and receive feedback in order to reflect on our own practice and revise their work. Creating a culture of sharing and of risk-taking requires modeling at all levels. We also help leaders to develop an instructional eye for Gold Standard PBL.

We work with your leaders to build the **CAPACITY** of **TEACHERS** and **COACHES**:

- Teacher capacity: Implementation can't occur everywhere at once. So developing an adoption strategy which might include early adopters will be important.
- Coaching capacity: Coaches need to be equipped to support the instructional staff in this practice and are an

important component of growing project quality in both design and practice in your schools.

When we work with districts, our goal is always to impact **STUDENT LEARNING** in a positive way. We want students to have more meaningful and deeper engagement with content and we want them to have a chance to apply what they are learning in order to demonstrate **EVIDENCE** of academic success and mastery of success skills as outlined in your graduate profile.

Services

Year 1: February - June 2023

Leadership Sessions

Leadership Sessions	Method	Anticipated Date	Duration	Type	Unit Cost	Quantity	Total
Leadership Jumpstart	Online	May - August	2 90-minute Zoom calls	workshop	\$3,750	1	\$3,750

Teacher Sessions - up to 35 attendees per workshop

Teacher Sessions	Method	Anticipated Date	Duration	Type	Unit Cost	Quantity	Total
PBL Project Slice Workshop - onsite	Onsite	Spring 2023	1 day	workshop	\$9,600	3	\$28,800
PBL 101 - onsite	Onsite	Summer 2023	3 days	workshop	\$14,300	2	\$28,600

*Note that it is recommended teachers receive two additional days of support per year after their PBL 101 Workshop to continue their professional learning around how to design & implement high quality projects.

SUBTOTALS	
Leadership Sessions	\$3,750

Teacher Sessions	\$57,400
Total Services (Yearly Total)	\$61,150

****Please note the total cost for PBLWorld covers registration, but does not include travel and accommodations.**

Year 2: July 1, 2023 - June 30, 2024

Leadership Sessions

Leadership Sessions	Method	Anticipated Date	Duration	Type	Unit Cost	Quantity	Total
Coaching Workshop (Open Online Workshop)	online	Various offerings	3 days	workshop	\$599	3	\$1,797**
PBL 101 Workshop (Open Online Workshop)	online	Various offerings	3 days	workshop	\$599	5	\$2,995**
PBL Classroom Walkthroughs	Onsite	Fall 2023	1 day	workshop	\$10,500	2	\$21,000

Teacher Sessions - up to 35 attendees per workshop

Teacher Sessions	Method	Anticipated Date	Duration	Type	Unit Cost	Quantity	Total
PBL 201- Quality of Student Work	On-Site	Summer 2024	3 days	workshop	\$14,750	2	\$29,500
Project Design Consulting	Onsite	Fall 2023	1 day	workshop	\$10,500	2	\$21,000
Sustained Support Visit - Building the Culture	Onsite	Spring 2023	1 day	workshop	\$10,500	2	\$21,000
Teacher Online Consultancy	Online	August 2023 - May 2024	40 x 30 min online sessions	hours	\$5,150	2	\$10,300

SUBTOTALS	
Leadership Sessions	\$25,792**
Teacher Sessions	\$81,800
Total Services (Yearly Total)	\$107,592**

****Please note the total cost for Open Online Workshops in 2024 is estimated.**

Year 3: July 1, 2024 - June 30, 2025

Leadership Sessions

Leadership Sessions	Method	Anticipated Date	Duration	Type	Unit Cost	Quantity	Total
PBL Classroom Walkthroughs	Onsite	Fall 2024	1 day	workshop	\$10,800	2	\$21,600

Teacher Sessions - up to 35 attendees per workshop

Teacher Sessions	Method	Anticipated Date	Duration	Type	Unit Cost	Quantity	Total
Project Design Consulting	Onsite	Fall 2024	1 day	workshop	\$11,000	2	\$22,000
Sustained Support Visit - Building the Culture	Onsite	Spring 2025	1 day	workshop	\$10,800	2	\$21,600
Teacher Online Consultancy	Online	August 2024 - May 2025	40 x 30 min online sessions	hours	\$5,300	2	\$10,600

SUBTOTALS	
Leadership Sessions	\$21,600

Teacher Sessions	\$54,200
Total Services (Yearly Total)	\$75,800

Summary

Below is a summary of services, dates and seats to support your planning and discussions:

Spring 2023

- Experience the four phases of a project via **2 Project Slice Workshops**.
- Begin PBL implementation with **2 PBL 101** workshops (up to 35 teachers per workshop, 75 total seats).
- School and District Leaders as they prepare to support teachers implementing their first projects with the **Leadership Jumpstart** calls.

July 2023 - June 2024

- Receive additional consultation and support from the facilitator with guided **Classroom Walkthroughs**.
- Offer small-group in-person coaching sessions on 1-3 Project Design topics, with a debrief session for Leadership afterwards, via **Project Design Consulting**.
- Learn and apply strategies for facilitating Gold Standard projects that engage all students in growth related to learning goals via **Sustained Support Visit**.
- Support implementation with just in time coaching through **Teacher Consultancy Hours** throughout the year.
- Investigate and deepen specific teaching practices that can help strengthen the quality of student work through a **PBL 201 - Improving the Quality of Student Work** workshop.

July 2024-June 2025

- Receive additional consultation and support from the facilitator with guided **Classroom Walkthroughs**.
- Offer small-group in-person coaching sessions on 1-3 Project Design topics, with a debrief session for Leadership afterwards, via **Project Design Consulting**.

- Learn and apply strategies for facilitating Gold Standard projects that engage all students in growth related to learning goals via **Sustained Support Visit**.
- Support implementation with just in time coaching through **Teacher Consultancy Hours** throughout the year.