



Alameda County 2021-22 School Guidance



Compiled by the
Alameda County Superintendent of Schools
and
Alameda County Health Officer


Updated January 5, 2022

Table of Contents

Latest updates are marked with a ☆

Federal Guidance	3
☆ State Guidance	4
☆ Local Guidance	5
☆ Vaccines	6
☆ Additional Guidance	7
Isolation, Quarantine & Testing Resources	8
Close Contact Letter Templates	8
Show up for School Resources	9
☆ FAQs	10 - 15

How to Use This Guidance Document

 Items marked with a gear icon are in the process of being updated.

As COVID-19 restrictions have been lifted and Alameda County has aligned itself with both state and federal guidance, we have created a new document for the 2021-2022 school year that makes it easier for you to go directly to the source for resources, guidance and pertinent documents.

Please note that many of the links include the date of their most recent version for your clarity.

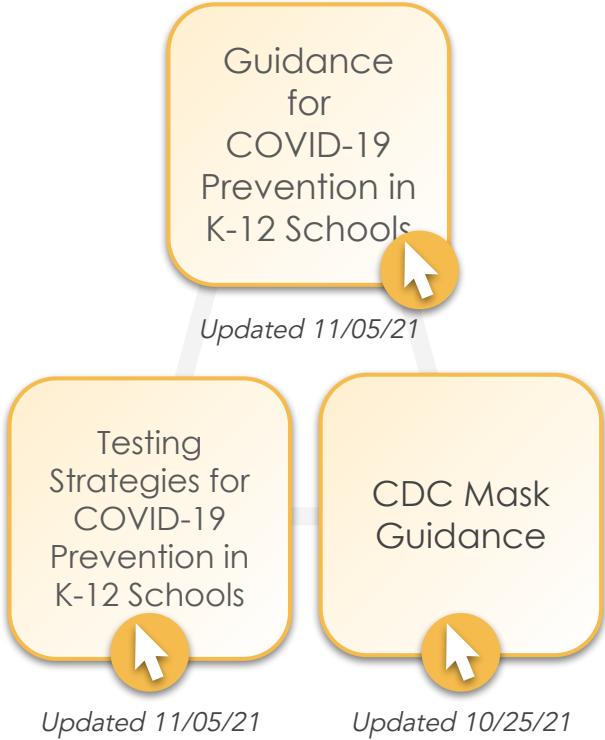
We will continue to ensure that these links are updated and that any other relevant information is added and we will mark new updates as they come in with teal text on the dates listed.



FEDERAL GUIDANCE

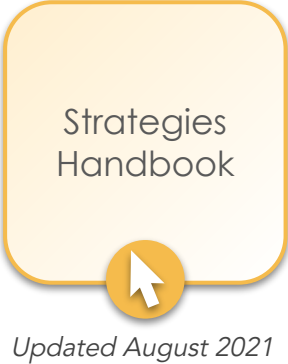
Centers for Disease Control

CDC Released the first version of its guidance for K-12 Education for the 2021-22 school year on July 9, 2021



U. S. Department of Education

This guide presents a pathway to reopen schools and help them remain open.



STATE GUIDANCE

State Guidance for Reopening Schools

The Safe Schools For All Hub consolidates key resources and information related to COVID-19 and schools.

Safe Schools
For All Hub



Emergency
Temporary
Standards for
Employers
and Workers

Updated 12/13/21

California Department of Public Health

Outbreak
Response Teams

Mobile
Testing and
Vaccination
Services

Updated 8/13/21

Guidance
for K-12
Schools

Updated 11/24/21
Includes Updated
Sports Guidance

Face
Covering
Guidance

Updated 12/13/21

K-12 Schools
Testing
Framework

Updated 11/01/21

Vaccine
Verification
Q&A

Updated 8/19/21

Vaccine
Verification
for Workers
in Schools

Updated 8/11/21

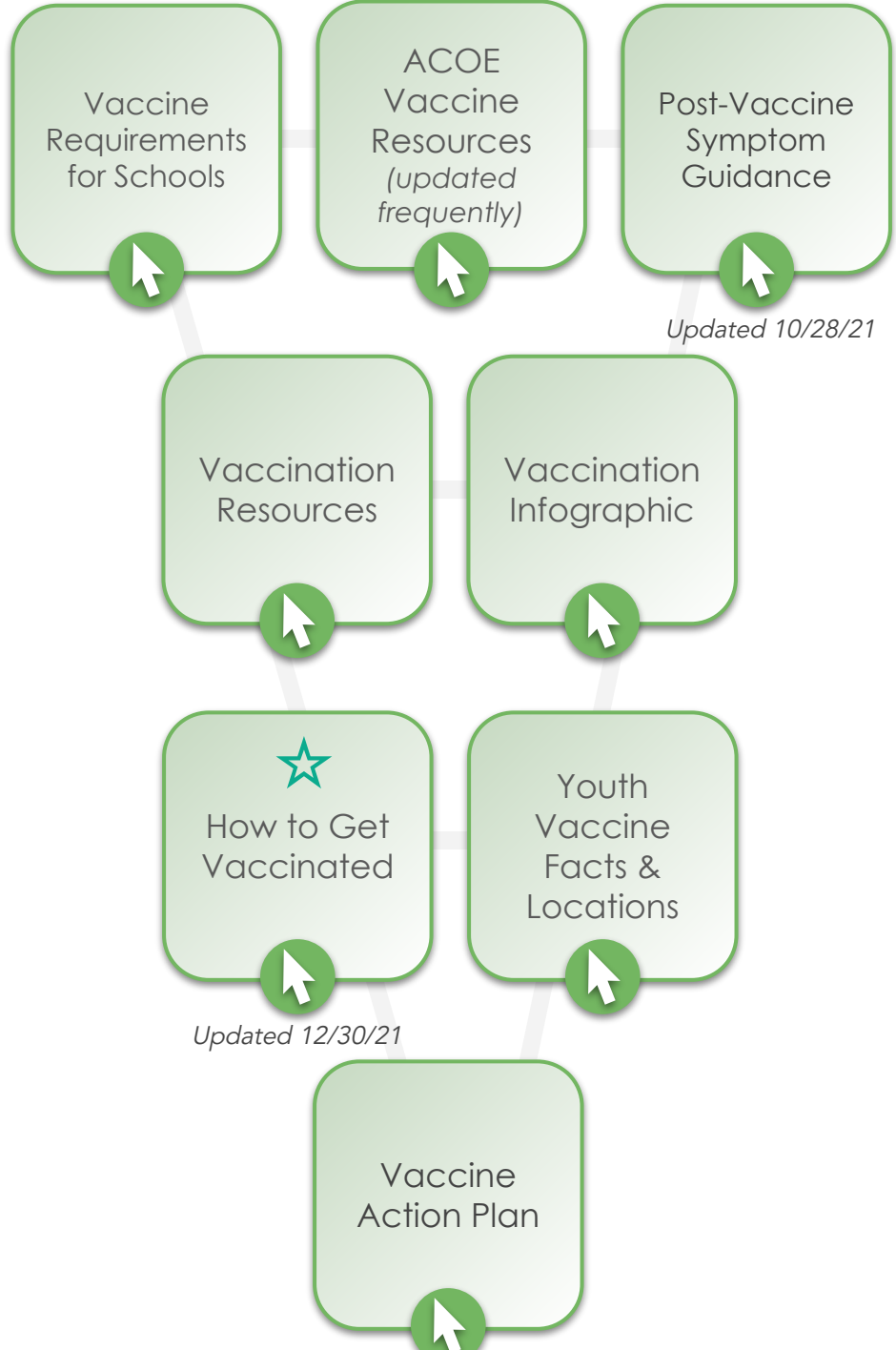
K-12 School
Guidance
FAQ

Updated 11/15/21

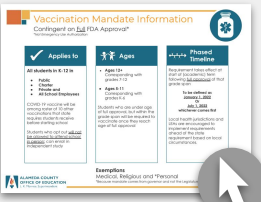


VACCINES

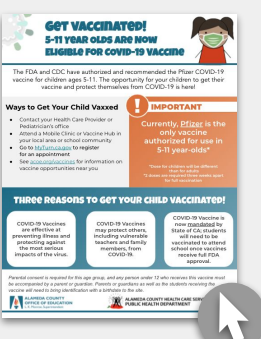
CDPH strongly recommends that all persons eligible to receive COVID-19 vaccines receive them at the first opportunity.



Vaccine Mandate Overview



Age 5-11 Vaccine Information





ADDITIONAL GUIDANCE

**A
B
C**

CHILD CARE

Updated 6/29/21

☰

AIR QUALITY

Updated 9/16/21

Masking

★

Face
Covering
Guidance

☞

Updated 12/13/21

★

Face
Covering
Q&A

☞

Updated 12/15/21

Events & Travel



Travel Guidance
Overview Flyer

TRAVEL

✈

Updated 12/13/21

★

Mega Events

☞

Updated 12/17/21

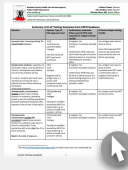
Tips to Stay Safe
During Potential
Winter Surge

Overnight Field Trips

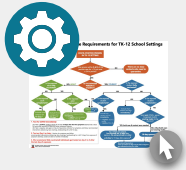


ISOLATION, QUARANTINE & TESTING

Handouts



Summary of K-12 Testing Scenarios
Updated 11.8.21



2021-2022 Quarantine Requirements for TK-12 School Settings



Modified & Shortened Quarantine



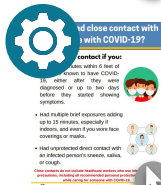
Quarantine Timeline



[When Can I Leave Isolation?](#)



[How Long Should I Stay in Quarantine?](#)



[Have I Had Close Contact With Someone With COVID-19?](#)



[I've Recovered From COVID, Now What?](#)

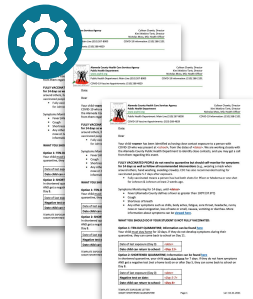


[Guidance for Close-Contact Positive Person in Household](#)



[How to Create Quarantine Space in Tight Quarters](#)

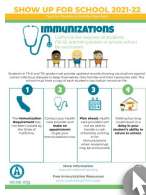
Close Contact Letter Templates



- [Letter for 10 Day Quarantine & Shortened Quarantine Options](#)
- [Letter for 10 Day Quarantine Option](#)
- [Letter for All Quarantine Options](#)

SHOW UP FOR SCHOOL RESOURCES

Handouts



[Immunization Information](#)



[What to Expect When Returning to School](#)



[Free Meals Information](#)



[Tips for Getting Back to Class](#)



[Changes to Independent Study](#)



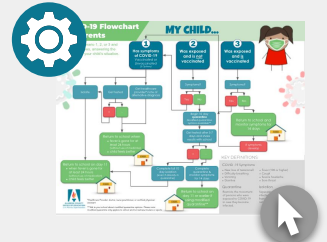
[Modified & Shortened Quarantine](#)



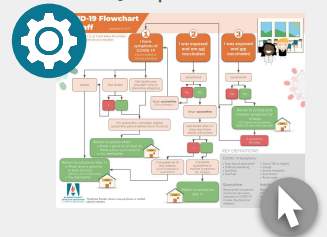
[Age 5-11 Vaccine Information](#)

Step-by-Step Flowcharts

Child Exposed to or Experiencing Symptoms



Staff Exposed to or Experiencing Symptoms





FAQ

Lunch & Recess

➤ **How can we minimize close contact when eating lunch indoors?**

Since students are not eligible for modified quarantine when contact is unmasked, employ physical distance to the degree feasible for your space. Look for opportunities to spread indoor lunch across multiple settings, so students don't all occupy one space. Maximize the opportunities for outdoor lunch. You might also consider requiring masking when students are not actively eating, both inside and outside, as a further layer of protection. Though there is no mandate for outdoor masking, you are still able to implement additional health measures where practicable.

➤ **If high schools have open campus for lunch, is it safe for students to leave campus? What are the implications for contact tracing with open campus?**

There is no recommendation to close campuses. However, if students are off campus for lunch, it would exclude these students from the modified quarantine option. It might also be more difficult to contact trace in the event of a positive case.

COVID Symptoms

➤ **What language should a medical evaluation (defined as Physician, Nurse Practitioner, or Certified Physician Assistant) include in at note documenting a student's chronic medical condition?**

The note should describe the symptoms typical of the student's underlying chronic condition (e.g., allergies or asthma) and provide a time boundary for the symptoms when applicable.

Quick Links



Testing FAQ



Face Covering FAQ

Vaccine FAQ



FAQ

Modified Quarantine

Modified and Shortened Quarantine Please see the [Modified and Shortened Quarantine document on page 9](#) for more detail regarding these alternative quarantine options.

➤ **Can students attend afterschool programs when they are in modified quarantine?**

Yes, as long as the afterschool program is located on the same campus where they attend school. Afterschool programs may be considered an essential component of the school day. Clear communication protocols with the school regarding who is in modified quarantine and for how long should be established. Though they may participate in aftercare/afterschool programs, they should refrain from all other extracurricular activities, including sports.

➤ **If students are exposed to a COVID-19 positive case in an afterschool program, are they eligible for modified quarantine?**

Yes, but you should proceed with caution. The ability to confirm mask compliance in the positive case and contacts, conduct twice-weekly testing, track test results, and develop clear communication protocols with the school regarding who is in modified quarantine and for how long should be in place.

➤ **Are the modified and shortened quarantine options required?**

No, modified and shortened quarantine are optional alternatives to a full 10-day quarantine. Districts/schools should consider their capacity to offer and track the testing component of these quarantine options before they decide to offer them to students.

➤ **Can students enter modified quarantine if they were exposed outside of a school setting?**

No. Modified quarantine applies only to potential exposures in indoor and outdoor school settings (including buses operated by the public and private school system). Please refer to the [CDPH FAQ](#) for an extensive list.

Definitions

Isolation separates people who are **infected** with a contagious disease from people who are not infected. [An infographic that explains Isolation can be viewed on page 8.](#)

Quarantine is used to keep someone who might have been **exposed** to COVID-19 away from others. [Frequently Asked Questions \(FAQ\) about Quarantine can be viewed on page 8.](#)



FAQ

Modified Quarantine

➤ **Are staff able to be on modified quarantine?**

No. Modified quarantine applies to students only.

➤ **In a modified quarantine, when can the student return? For example, if they have their first test scheduled for Wednesday, can they return on Tuesday? Or must they have completed the first test prior to return?**

Ideally, the student will get tested immediately (i.e. the first day they are in quarantine). If the student is not able to test immediately, they may remain in class while they seek testing and await the result. The second test should be at least 3 days after the first test. If their final test is negative on or after day 5, they may exit quarantine on Day 8.

➤ **What do we do when there are multiple students who test positive in a classroom?**

★ Additional case investigation and contact tracing are required for each additional case. Exposed students can remain at school in modified quarantine or the school can elect to have students complete at-home quarantine.

➤ **When determining the appropriate type of quarantine, what does it mean to be unmasked?**

If a student is unmasked for > 15 minutes, including at lunch or recess, then the student would be considered unmasked.



FAQ

General Quarantine & Siblings

- **If a student/staff person develops symptoms of COVID-19 while in quarantine and is not able to get a timely test result, what should the school do?**

Since the person has been exposed and has symptoms, you can presume the person is COVID-19 positive and ask that unvaccinated siblings and close contacts at school enter quarantine. If the symptomatic person receives a negative PCR or molecular test, siblings and close contacts may be released from quarantine.

- **What if a parent or sibling has COVID-19 and cannot avoid interacting with a student?**

If the student is vaccinated, they do not need to quarantine. If they are unvaccinated, the student should quarantine for at least 10 days after the person with COVID-19 in their household completes 10 days of isolation. Day 1 of quarantine is the day the infected person was released from isolation.

- **If a student has been exposed to a positive case at school, do the student's siblings also need to quarantine?**

No, only the close contacts of the positive case must quarantine.

- **If a student or staff member was previously diagnosed with COVID-19, do they need to quarantine after being exposed to a positive case?**

If a student or staff member was diagnosed with/tested positive for COVID-19 within the last 90 days, they do not have to quarantine as long as they remain asymptomatic. The 90-day period begins the day the person was released from isolation. If they develop symptoms of COVID-19, they should isolate and contact their healthcare provider.



FAQ

Positive Cases/Treating After 90 Days

- **Does someone who has been diagnosed with COVID-19 need to receive a negative test result before returning to work or school?**

No. People who have been diagnosed with COVID-19 should not test for at least 90 days after they have been released from isolation. People may continue to test positive after they are. ACPHD advises against testing within 90 days, including screening testing at school sites. If the person has symptoms, they should isolate and contact their health care provider to determine appropriate next steps.

- **Does someone with a possible false positive antigen result need to begin isolation right away?**

If a positive antigen test is being confirmed by PCR, the person should isolate until the results of the PCR are back.

- **What should I advise a student/staff to do who has had COVID in the past 90 days and develops symptoms?**

Anyone with symptoms of COVID-19 should get tested. A positive antigen test would indicate a new COVID-19 infection. A positive PCR test may indicate a new infection or leftover virus from the previous infection. If someone had a documented COVID-19 infection within 90 days and tests positive by PCR, they should contact their healthcare provider for next steps.



FAQ

Masking

➤ **Can we have more strict masking requirements than the guidance?**

Yes. Schools and districts can set policies more restrictive than the state and county guidance, but not less restrictive.

➤ **Are mesh masks acceptable?**

Mesh masks are decorative only and do NOT meet CDPH guidance on what constitutes an effective mask. See CDPH "[Get the Most out of Masking](#)" resource.

Contact Tracing

➤ **Are seating charts required for indoor classroom spaces for contact tracing purposes?**

Seating charts are not required but strongly recommended, wherever possible, to assist with contact tracing.

Travel

➤ **How does Alameda County Public Health Department (ACPHD) define domestic travel?**

CDPH has [summarized CDC travel guidance](#). Alameda County has defined domestic travel as travel outside the nine Bay Area counties (Alameda, Contra Costa, Marin, Napa, San Francisco, San Mateo, Santa Clara, Solano and Sonoma).